



Shirland Road, London, W9 2JD
£485,000 Leasehold



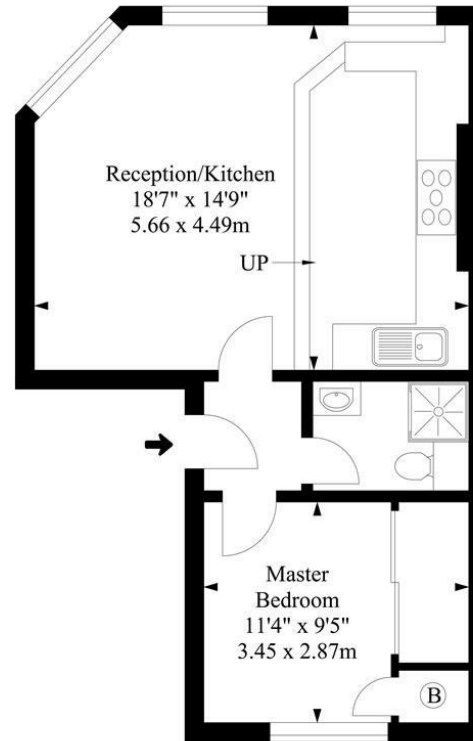
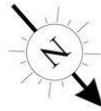


1 x  1 x  1 x 

An exceptionally bright one bedroom first floor flat situated on the corner of Elnathan Mews and Shirland road within a Victorian building. The apartment comprises an imposing 18'7 ft reception with three large sash windows, facing south giving an abundance of natural light, high ceilings, and open plan contemporary kitchen with breakfast bar. The double bedroom having built in storage and views of the award winning mews, and a modern shower room. Ideally located close to Warwick Avenue tube station (Bakerloo Line) and just a ten-minute walk from Paddington Station (Elizabeth Line, Hammersmith & City Line, Circle Line and District Line). A further benefit is its proximity to the cafés, restaurants and bars of Formosa Street, which are just moments away.



Approx. Gross Internal Area
435.61 Ft² - 40.47 M²



First Floor

Illustration For Identification Purposes Only. Not To Scale

Important Notice Debussy Property Service Ltd trading as Braithwait for themselves and for the vendor of this property whose agents they are, give notice that (i) these particulars do not constitute any part of an offer or contract, (ii) all statements contained within these particulars are made without responsibility on the part of Braithwait or the vendor, (iii) whilst none in good faith, none of the statements contained within these particulars are to be relied upon as a statement of representation or fact, (iv) any intending purchaser must satisfy him/herself by inspection or otherwise as to the correctness of each of the statements contained within these particulars, (v) the vendor does not make or give either Braithwait or any person within their employment any authority to make or give any representation or warranty whatsoever in relation to this property. Wide angled lenses may be used in photographs.

Call us on 0207 289 8889 or email sales@braithwait.co.uk

